

**SIMONA**



**SIMOPOR**

Lightweight PVC free-foam sheets

GLOBAL THERMOPLASTIC SOLUTIONS

# SIMOPOR –

## Proven PVC free-foam sheets reinvented

SIMONA's SIMOPOR product family unlocks new possibilities for creative designs in the field of visual communication and construction. From pure white to vibrant colours, from low flammability to light as a feather – our extended product range includes solutions tailored precisely to your projects.



### Key areas of application

SIMOPOR sheets are the perfect choice for those fields of application in which lightweight design and aesthetics are of particular importance. Low weight translates into effortless handling – from initial transport to final finishing.

#### Areas of use:

- Exhibition and shop design
- Display design
- Printing sector
- Advertising signage
- Room installations
- Furniture making
- Construction and design

Benefiting from a clearly defined profile of properties, you are certain to find a suitable SIMOPOR sheet for your application in no time at all.

### In tune with the environment

We love plastics. And our environment. For many decades now, we have been producing PVC sheets without hazardous lead stabilisers.



We are an active member of VinylPlus, an organisation that focuses on improving sustainability within the PVC supply chain. By participating in the “Zero Granulate Loss” initiative of the German Association for Semi-Finished Plastics and Consumer Products (pro-K), we also help to reduce the overall volume of plastic granulate discharged into our waste water or the environment. The initiative is part of the international “Operation Clean Sweep” programme, which is committed to the containment of granulate losses and marine litter.



**SIMOPOR**S  
CERTIFIED PREMIUM PVC FOAM SHEET

**SIMOPOR**SP  
FOR PREMIUM DIGITAL PRINTS

**SIMOPOR**E  
BASIC PVC FOAM SHEET

**SIMOPOR**EP  
FOR EFFICIENT DIGITAL PRINTING

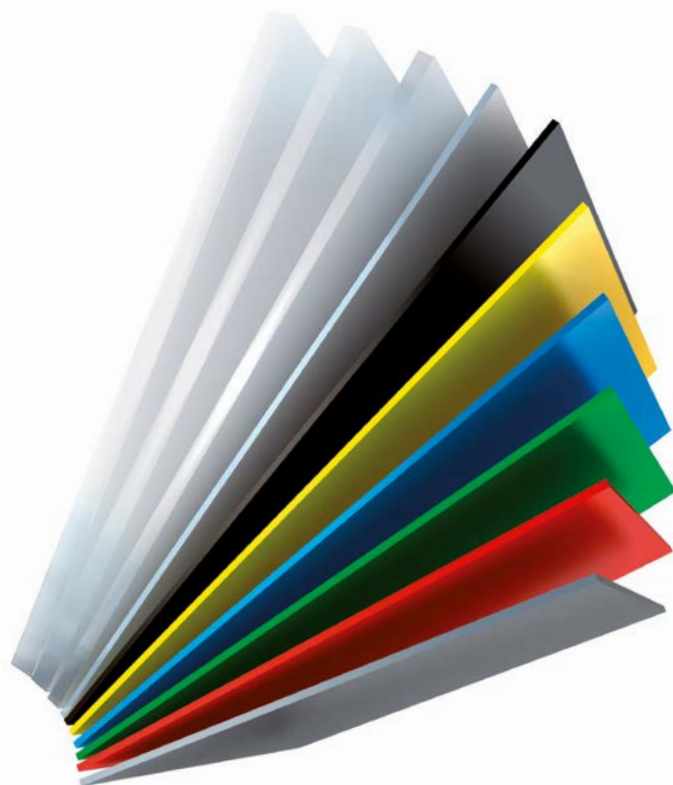
**SIMOPOR**COLOR  
COLOURED PVC FOAM SHEETS

#### Perfect products tailored to your requirements

Be as creative as you like – and put your trust in SIMONA to supply a product that allows you to bring your ideas to life. The new SIMOPOR range includes five different product types engineered for use in specific fields of application.

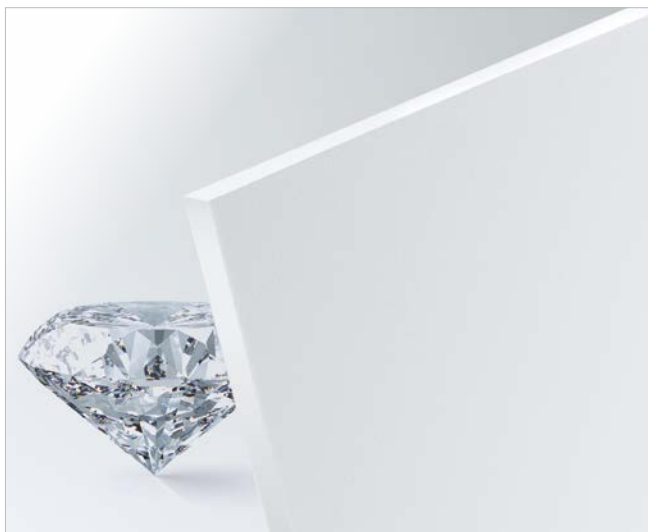
#### The thrill of colour

Even the slightest differences in hue can have a significant effect on print quality and a major impact on visual communication as a whole. Our SIMOPOR family includes three shades of white and six individual colours to ensure premium-quality results.



## SIMOPOR S

### SMART



#### Premium quality for the widest range of applications

SIMOPOR S is our smart allrounder for high-end results. Impressive technical properties combined with the benefits of excellent processability make SIMOPOR S the material of choice for a broad range of applications – from exhibition and shop design through to high-quality room installations. Thanks to its low flammability, this product also offers total peace of mind in those areas in which safety is paramount.

#### Properties:

- Best mechanical properties and excellent processing capabilities
- Low flammability – perfect for exhibition and display design
- Very good printability due to smooth surface
- Suitable for laminating and spray-painting
- Resilient, including outdoor applications
- Extensive range with excellent choice of thicknesses (1 to 19 mm)

#### Colour:

- Standard white

## SIMOPOR SP

### SMART PRINT



#### Colours come to life

SIMOPOR SP has been designed specifically for digital direct printing. Boasting a unique formula, it delivers superb printing results with brilliant image reproduction. The smooth, finely structured surface finish facilitates ink acceptance even during high-speed processing.

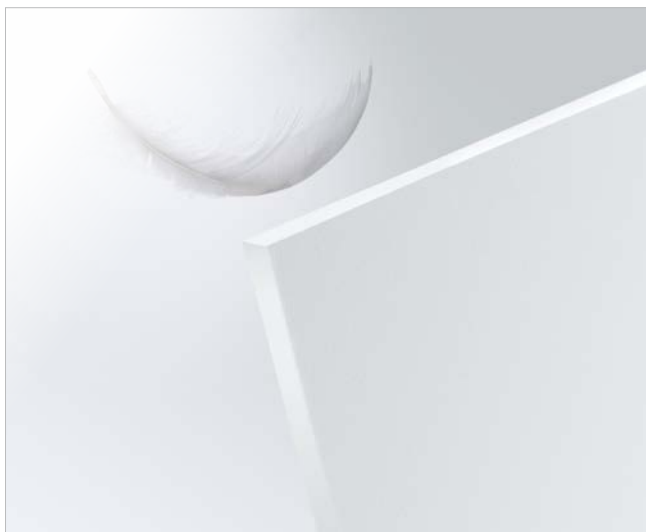
#### Properties:

- Excellent printability on a wide range of flatbed printers
- Optimised shade of white for vibrant images in digital direct printing
- Excellent ink acceptance
- Suitable for all standard UV and solvent inks
- Very good processing properties
- High level of flatness
- Low flammability
- Suitable for laminating and spray-painting
- Very resilient, including outdoor applications

#### Colour:

- Functional white  
(optimised shade for digital printing)

## **SIMOPOR<sup>E</sup>** ECONOMICAL



### **Quality on a budget**

E as in “Economical” – in SIMOPOR E, we have developed a particularly cost-effective solution for signage and short-term design applications. Due to their low weight, the sheets are easy to handle.

#### **Properties:**

- Cost-optimised quality for short-term applications
- Extremely low weight
- Easy handling
- Limited printability and processability
- Suitable for temporary outdoor use

#### **Colour:**

- Bright white

## **SIMOPOR<sup>EP</sup>** ECONOMICAL PRINT



### **Radiant prints at your fingertips**

SIMOPOR EP is our lightweight alternative for print applications. Among its key features are its lightweight design and a pure white hue that will bring complete radiance to your images. This is the perfect choice when it comes to implementing your ideas in a cost-effective manner and experiencing the vibrancy of magnificent colours.

#### **Properties:**

- Very good printability thanks to brilliant shade of white
- Sharp image reproduction
- Suitable for all standard UV and solvent inks
- Low weight
- Good processing characteristics
- Simple handling
- Suitable for laminating and spray-painting
- Very resilient, including outdoor applications

#### **Colour:**

- Bright white



**More colours, more possibilities**

SIMOPOR-COLOR are through-coloured PVC free-foam sheets with a perfectly even surface finish. Available in six colours, they open up a wide range of possibilities for exhibition, signage and display design.

**Properties:**


- Wide range of colours
- Consistent colouring throughout the sheet
- Excellent mechanical properties and very good processability
- Very good surface quality
- Suitable for printing, laminating and spray-painting
- Resilient

**Colours:**

- Blue
- Yellow
- Green
- Grey
- Red
- Black

**One product family – many processing options**

Products within the SIMOPOR range can be easily processed using standard tools. Their dimensional stability is excellent.

	Sawing
	Bolting
	Drilling
	Milling
	Backing, laminating
	Water-jet cutting
	Glueing
	Warm bending
	Printing
	Spray-painting
	Die-cutting



# SIMOPOR product range and material specifications


## Product range

The choice is yours: standard SIMOPOR sheets are available in various sizes.

### Product range

	SIMOPOR S	SIMOPOR SP	SIMOPOR E	SIMOPOR EP	SIMOPOR-COLOR
--	-----------	------------	-----------	------------	---------------

### Extruded sheets (size/thickness in mm)

	2,440 x 1,220	1 to 19	1 to 10	—	—	—
	3,050 x 1,220	1 to 19	1 to 10	—	—	3, 5, 6
	3,050 x 1,530	1 to 19	1 to 10	—	—	3, 5, 6
	3,050 x 1,560	—	—	3 to 19	2 to 10	—
	3,050 x 2,030	1 to 15	1 to 10	—	—	3, 5, 10 (black only)
	3,050 x 2,050	—	—	3 to 10	1 to 10	—
	4,050 x 2,030	3, 5, 10	3, 5	—	—	—

All dimensions specified are standard dimensions. Other sizes, thicknesses and colours available on request. Products in various formats and thicknesses are available from stock. Please contact our sales department for further details concerning availability: [sales@simona-group.com](mailto:sales@simona-group.com).

## Material specifications

Our products are subjected to extensive technical assessments as well as endurance testing. Our in-house laboratory is responsible for testing all material specifications and long-term properties on a continual basis.

### Material specifications

		SIMOPOR S	SIMOPOR SP	SIMOPOR E	SIMOPOR EP	SIMOPOR-COLOR
Tensile modulus of elasticity, MPa, DIN EN ISO 527		900	850	650	750	1,000
Flexural modulus of elasticity, MPa, DIN EN ISO 178		1,100	1,000	750	850	1,400
Shore hardness D, DIN EN ISO 868		35	32	23	28	35
Mean coefficient of linear thermal expansion, K <sup>-1</sup> , ISO 11359-2		0.7 x 10 <sup>-4</sup>	0.7 x 10 <sup>-4</sup>	0.7 x 10 <sup>-4</sup>	0.7 x 10 <sup>-4</sup>	0.7 x 10 <sup>-4</sup>
Specific surface resistance, Ohm, DIN IEC 60093		≥ 10 <sup>13</sup>	≥ 10 <sup>13</sup>	≥ 10 <sup>13</sup>	≥ 10 <sup>13</sup>	≥ 10 <sup>13</sup>
Fire behaviour	DIN 4102	B1: 1 to 19 mm	—	—	B1: 3, 5 and 10 mm	B2 (self-assessment without test certificate)
	NF P 92-501	M1: 3 to 10 mm	M1: 1 to 10 mm	—	M1: 3 to 10 mm	—
	DIN EN 13501-1	Euroclass B-s3-d0: 1 to 19 mm	Euroclass C-s3-d0: 1 to 10 mm	—	Euroclass B-s2-d0: 3, 5 and 10 mm	—
Temperature range, °C		0 to + 60	0 to + 60	0 to + 60	0 to + 60	0 to + 60

All specifications are deemed to be approximate values in respect of the specific material and may vary depending on the processing methods used. In general, data specified applies to average values measured on extruded sheets with a thickness of 4 mm. Deviations from the values specified are possible if the sheets in this thickness are not available. Information presented herein is not necessarily applicable to other products (e.g. pipes, solid rods) of the same material or products that have undergone downstream processing. Suitability of materials for a specific field of application must be assessed by the party responsible for processing or the end-user. All technical specifications presented herein are designed merely to provide assistance in terms of project planning. They do not constitute a guarantee of specific properties or qualities.

## Welcome to SIMONA – Delivering quality and service



SIMONA is acknowledged as one of the leading producers and development partners in the field of semi-finished thermoplastics. Drawing on our outstanding abilities in process engineering, we specialise in the production of sheets, finished parts, profiles, welding rods, rods, pipes, fittings and valves tailored to the most exacting standards.

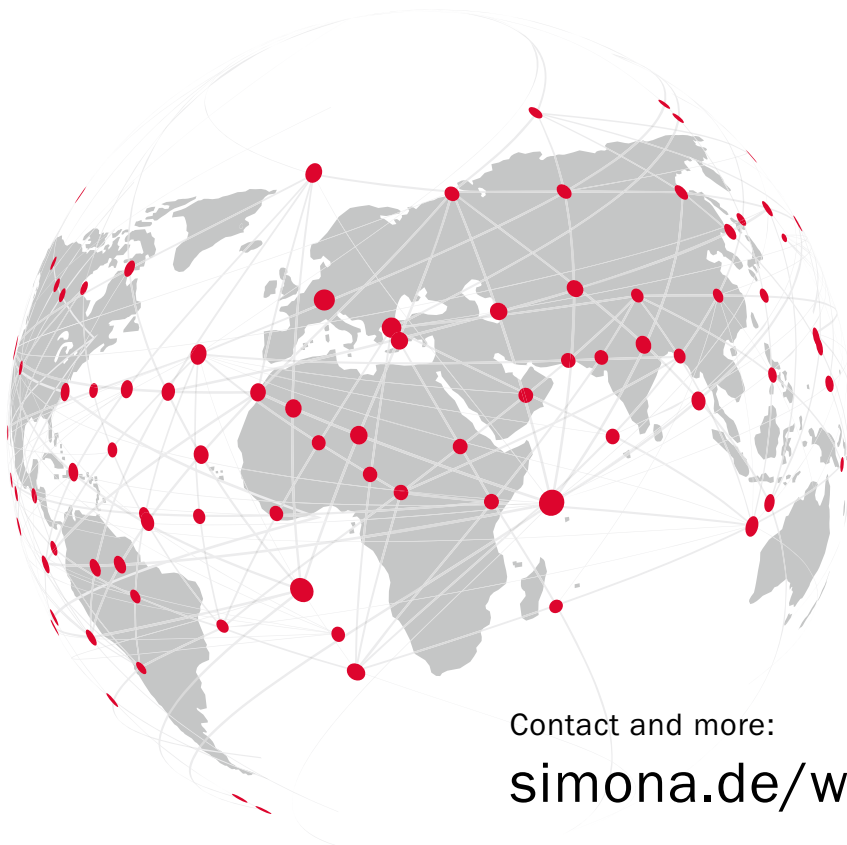
You will be able to rely on our extensive know-how and high level of technical expertise in the field of polymer engineering. If you have any questions with regard to the processing of our products, please feel free to contact a staff member at our Technical Service Centre.

---

**i** Phone +49(0) 67 52 14-587  
Fax +49(0) 67 52 14-302  
[tsc@simona-group.com](mailto:tsc@simona-group.com)

---

## GLOBAL THERMOPLASTIC SOLUTIONS



### **SIMONA AG**

**Teichweg 16  
55606 Kirn  
Germany**  
Phone +49(0)6752 14-0  
Fax +49(0)6752 14-211  
[mail@simona-group.com](mailto:mail@simona-group.com)  
[www.simona.de](http://www.simona.de)



Contact and more:  
**[simona.de/worldwide](http://simona.de/worldwide)**

Upon publication of a new edition all previous editions shall become void. The authoritative version of this publication can be found on our website at [www.simona.de](http://www.simona.de). All information furnished in this publication reflects our current scope of knowledge on the date of publication and is designed to provide details of our products and potential fields of application (errors and omissions excepted, including typographical mistakes). Any reproduction of this publication or any unconnected use of specific content taken from this publication are strictly prohibited; legal action will be taken in the event of an infringement. Exceptions hereto will require our prior approval in writing.